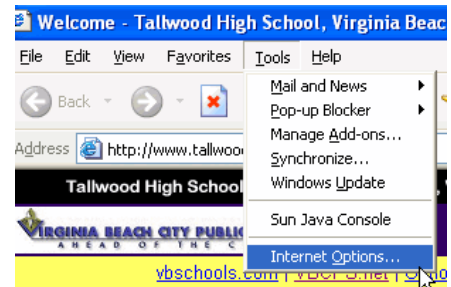


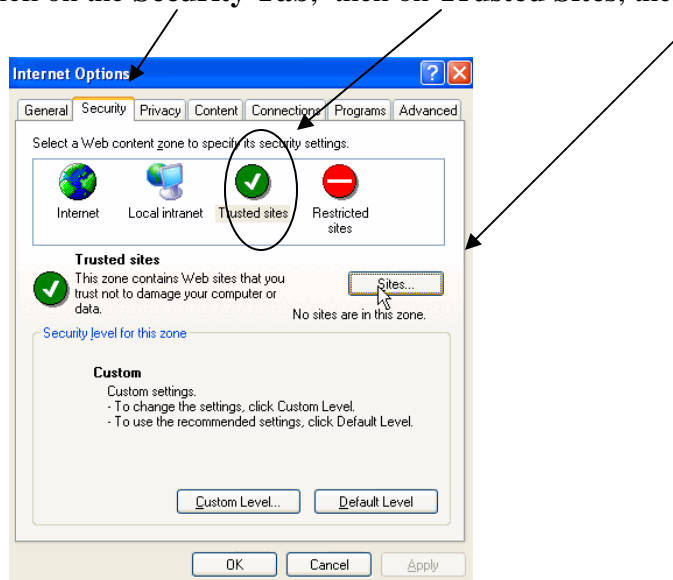
Adding the Student Portal to your Trusted Sites

1. Open your internet browser. (The illustrations in this guide are from Internet Explorer. Other browsers may look slightly different.)

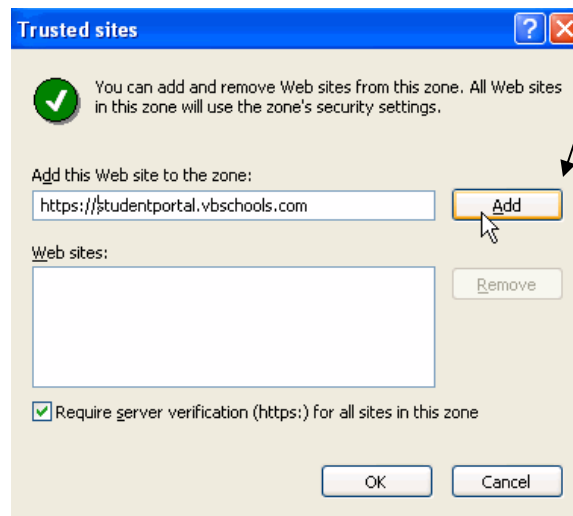


2. Click on Tools – Internet Options

3. On the next screen, click on the **Security Tab**, then on **Trusted Sites**, then **Sites**



4. Add: <https://studentportal.vbschools.com> and then click on ADD



Make sure the green arrow is selected. Click OK.